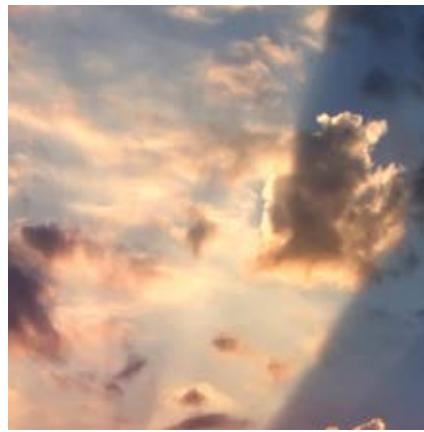
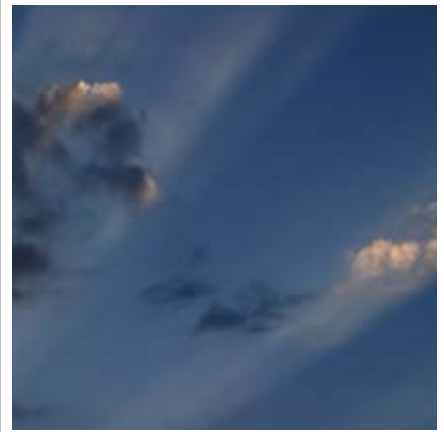




LEADERSHIP



LIFECYCLE PERSPECTIVE



DOCUMENTATION



PROTECTION



FURTHER EXCELLENCE



RISK THINKING



PERFORMANCE



COMMUNICATION



REPUTATION

TAKE A MORE STRATEGIC APPROACH TO ENVIRONMENTAL MANAGEMENT

ISO 14001:2015 TRANSITION TOOLKIT

SGS

A NEW STRATEGIC APPROACH FOR ENVIRONMENTAL MANAGEMENT: ISO 14001:2015

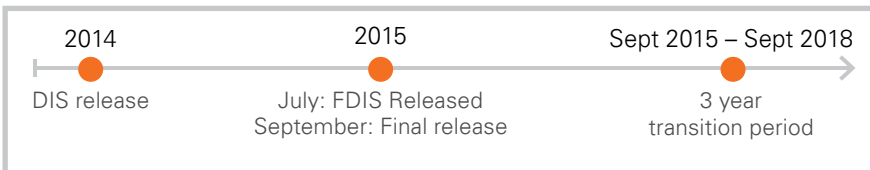
The publication of ISO 14001:2015 in September 2015 is the final stage in the revision process of the standard. This version replaces ISO 14001:2004, though there is a 3 year transition period.

KEY DEVELOPMENTS

Annex SL Framework
Annex SL is now the expected format for all new and revised ISO Management Systems Standards (MSS). This framework has been adopted by ISO 14001:2015, including the new clause structure and terminology.

ISO: responding and improving
The new standard responds to industry feedback, trends, experience and relevant reports including the findings from the 'Future Challenges for EMS' report and the 'ISO 14001 Continual Improvement Survey' published by ISO.

TIMELINE



EMERGING CHANGES

ISO 14001:2015 requires a **Strategic Environmental Management**, understanding the context of the organisation determining external and internal issues relevant to the organisation and the environment. Particular focus is on the needs and expectations of interested parties that can affect, or be affected by, the organization. In this context the organisation shall identify risk associated with threats and opportunities, significant environmental aspects and compliance obligations, and determine actions to address them within the Environmental Management System (EMS).

Among the other Emerging Changes identified by the team responsible for the revision process (subcommittee ISO/TC 207/SC1) are new or enhanced in requirements on **Leadership, Protection of the environment, Environmental performance, Lifecycle thinking, Communication and Documentation.**

STRUCTURE AND TERMINOLOGY

ISO 14001:2015 adopts the High Level Structure specified in ISO Annex SL which is now the required framework for all new and revised Management System Standards.

EMS requirements are now presented in a more consistent, rational manner and

not just a template for the elements of an organisation's EMS

ISO 14001:2015 includes updated terminology and definitions, some in common with other Management Systems Standards.

SGS SOLUTIONS FOR A SMOOTH TRANSITION

As the world's leading certification body and a professional learning and development organisation, we offer you a variety of solutions during the transition process. We are in an ideal position to support you through this transition process whether you are an SME or an global organisation.

TRAINING

As part of our training portfolio for ISO 14001: 2015, we have developed several courses to assist you in managing your own transition:

- **Annex SL:** We will help you understand the high level structure of the new framework and how integration with other management system standards is becoming more efficient.
- **ISO 14001:2015:** An introduction to the changes in the new version and explains how this will impact your existing system.
- **Risk-Based Thinking:** A course covering the principals that support

the identification of risk and opportunities and the different techniques/methodologies needed to address them.

- **Empowering Leadership:** A two day workshop addressing the skills needed by those operating in Quality, Environmental and Health and Safety roles for the forthcoming evolution of management systems standards and their respective commercial impacts.

NEEDS ASSESSMENTS:

Our experts can carry out a gap analysis against the new requirements to make your transition smooth and transparent. This provides your organisation with structured assistance by highlighting the extent that your existing systems and controls cover the requirements of ISO 14001:2015 and by identifying an implementation action plan where you need it.

ISO 14001 CERTIFICATION:

SGS will, of course, now be offering ISO 14001:2015 certification to both new and existing clients.

WHY SGS?

SGS is the world's leading inspection, verification, testing and certification company. SGS is recognised as the global benchmark for quality and integrity. With more than 85,000 employees, SGS operates a network of over 1,800 offices and laboratories around the world.

We are constantly looking beyond customers' and society's expectations in order to deliver market leading services wherever they are needed. We have a history of undertaking and successfully executing large-scale, complex international projects. With a presence in every single region around the globe, our people speak the language and understand the culture of the local market, and operate globally in a consistent, reliable and effective manner.

FOR AN OPTIMAL TRANSITION

TOWARDS ISO 14001:2015

CONTACT [CERTIFICATION@SGS.COM](mailto:certification@sgs.com)
OR VISIT [WWW.SGS.COM/ISO14001-2015TRANSITION](http://www.sgs.com/iso14001-2015transition)

WWW.SGS.COM

WHEN YOU NEED TO BE SURE

