

Selling Toys in China

WHAT YOU NEED TO KNOW ABOUT THE MANDATORY CERTIFICATION



WHAT IS CCC?

The China Compulsory Product Certification (CCC) program covers 17 product categories, including toys – four product areas: electric toys, plastic toys, metal toys, ride-on toys



SGS

Which toys are within scope of CCC?



GENERAL PLASTIC TOYS

Dolls (toys, at least head and limbs, made of non-woven polymer material, and with clothing or soft materials filled body), plastic projectile toy, playmats



ELECTRIC TOYS

Battery operated toys, video toys, toys that produce sound and light



METAL TOYS

General metal toys (non-electric toys), metal projectile toys



RIDE-ON TOYS

Toy bicycles, electric children vehicles, other toy vehicles



CHILDREN'S BICYCLES

Children's tricycles, wheeled children conveyances, baby walkers

Products listed in this category are not all toys

What materials do you need for certification application?

CHECK-LIST

- ✓ Application form
- ✓ Business license
- ✓ Product description and critical material table
- ✓ List of production and testing equipment
- ✓ Agreement of CCC certification (CHN version only)
- ✓ OEM/ODM agreement (if applicable)
- ✓ Declaration of conformity
- ✓ List of Quality documents
- ✓ Quality manual

How toys are regulated in China?

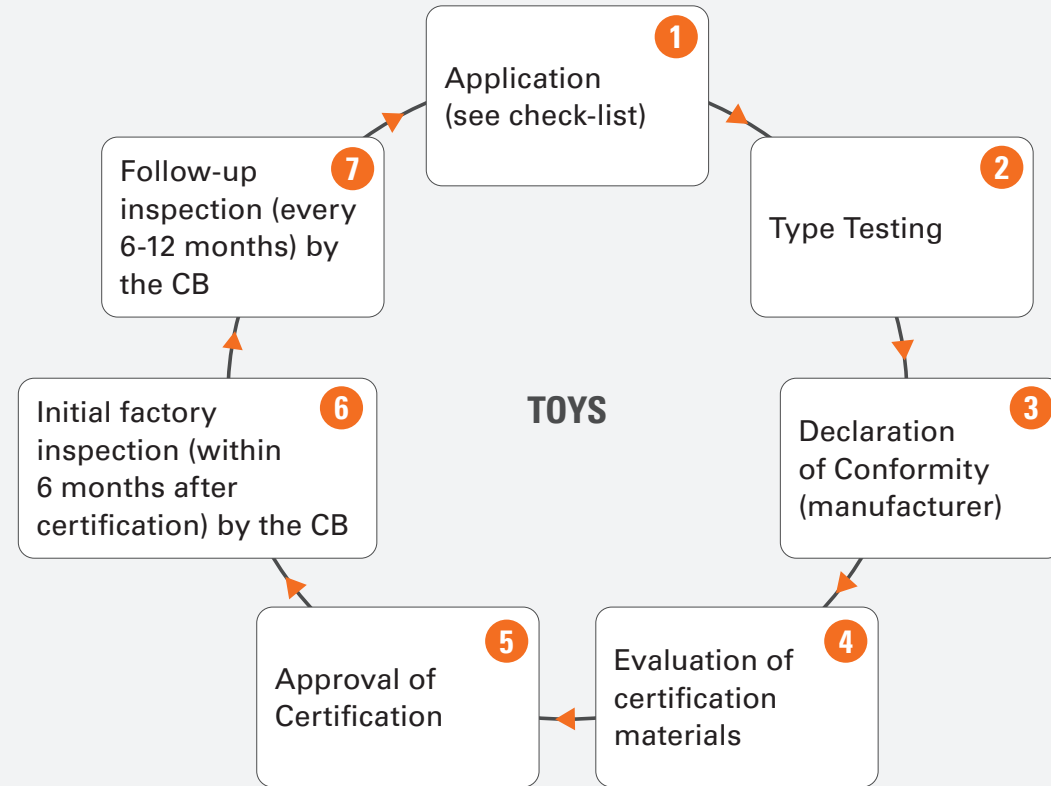
China's Toy Safety Standard GB 6675-2014 applies:

- **GB 6675.1:** Basic Code
- **GB 6675.2:** Mechanical and physical properties
- **GB 6675.3:** Flammability
- **GB 6675.4:** Migration of Certain elements
- **GB 6675.11:** Swing, slides and similar activity toy
- **GB 6675.12:** Toy scooters
- **GB 6675.13:** Chemical toys (sets) other than experiment sets
- **GB 6675.14:** Requirements & Test Methods of Finger Paints

For electric toys:

- **GB 19865:** Electric toys-safety

What is the toy certification process?



CB: Certification Body

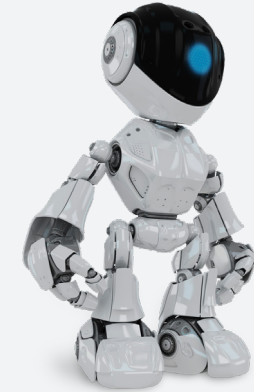
Step 2 – A CNCA-designated certification bodies (DCB) in China will issue the testing plan for the products

How can SGS help?

SGS's toy laboratory in Hong Kong, China has been accredited to carry out testing on toy products against the CCC standard.

CONTACT

Red Hong
Connectivity & Products
Product Certification Team
Hardlines
t: +86(0)755 2532 8888 ext.8921
hk.hardlines.enquiry@sgs.com



Toy Robot. *Tested.*

Makes no difference if it's a race car or a robot, if brother and sister fight to play or politely take turns, if it spends most of its time on the dinner table or stuck in the closet.

As the world's leader in inspection, verification, testing and certification, SGS helps to ensure that your electronic toys are safe to use and durable.

In the end, it's only trusted because it's tested.

Trusted means *Tested.*

WWW.SGS.COM/TOYS

WHEN YOU NEED TO BE SURE

