



DAMAGE FORENSICS

SGS INTRON IS NOW PART OF SGS, THE WORLD'S LEADING INSPECTION, VERIFICATION, TESTING AND CERTIFICATION COMPANY.

WWW.SGS.COM/INTRON

SGS

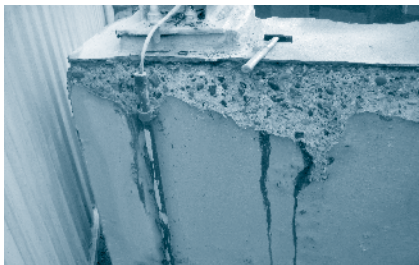
EXPERTS IN BUILDING MATERIALS

OBJECTIVE

Assessing damages of buildings and structures is often complex work, because of the wide variety of building materials, damage types and possible causes. Nevertheless, when the damage has been established, the questions that need to be answered are in essence nearly always the same

- Is the structure (still) safe?
- What has caused the damage?
- How bad is the damage?
- Can the problem be fixed?
- How much does the repair cost?
- How can future problems be prevented?

Answering these questions is the basis of a solid damage assessment. The user of the building/structure should always be the focus point. This means that, apart from technical aspects, the damage assessment should also take financial/economical aspects into account, such as repair costs and intended service life. The safety of the structure should always be a central part in any damage assessment.



THE SOLUTION

SGS INTRON provides a multitude of damage assessment services, covering all aspects with regard to damage assessment, including

- Determining the cause(s) of the damage, in relation to the use and the environmental conditions

- Assessment of damage effects; this includes the extent of the damage as well as nature of the damage (damage mechanisms)
- Evaluation of possible repair strategies and mitigating measures
- Recommendations/advise on the best repair method, based on the current and (intended) future use of the structure
- Monitoring the execution of the repair work to minimise the risk of future damage

SGS INTRON is an independent body and can therefore also act as an impartial third party between conflicting parties.



WHY SGS INTRON?

SGS INTRON has highly qualified personnel with an extensive knowledge on all relevant aspects regarding damage assessment, including materials science, damage mechanisms and repair methods as well as cost aspects.

SGS INTRON uses state-of-the-art equipment for damage assessment, in the field, as well as at the SGS INTRON laboratory. These techniques include Non-Destructive Testing (NDT) and advanced microscopic techniques, such as (concrete) petrography.

SGS INTRON is a champion for a high quality standard in the building industry and building materials in particular. This is why SGS INTRON strives to provide durable solutions that always provide at least the same quality as before the damage.

OUR SERVICES

Our damage assessment services include

- Inspection of damaged structures on site, in relevant cases supported by NDT
- Laboratory testing of damaged and/or deteriorated materials
- Interpretation of damage phenomena and determination of causes
- Assessment of (remaining) service life, state of maintenance
- Drawing up repair and maintenance plans
- Assessment/auditing of repair work
- Impartial research and/or mediation, a.o. in conflicts between parties regarding damages

SGS INTRON representatives are happy to help you with any questions. Please contact

SGS INTRON B.V.

Dr. Nolenslaan 126
6136 GV Sittard
t +31 46 420 4204
f +31 46 452 9060

SGS CERTIFICATIE B.V.

Venusstraat 2
4105 JH Culemborg
t +31 345 585 170
f +31 345 585 171

nl.intron@sgs.com
www.sgs.com/intron

SGS IS THE WORLD'S LEADING INSPECTION, VERIFICATION, TESTING AND CERTIFICATION COMPANY.

WHEN YOU NEED TO BE SURE

SGS