

# SUSTAINABLE SOLUTIONS WITH SGS MOBILE SAMPLE PREPARATION UNITS (MSPU)



Our value to society is to enable a better, safer and more interconnected world. Sustainability is embedded in our culture and the way we do business. With more than 89,000 employees in 140 countries, we use our scale and expertise to enable a more responsible, balanced and sustainable future. As sustainability leaders, we are committed to promoting best-in-class practices within the mining sector and beyond.

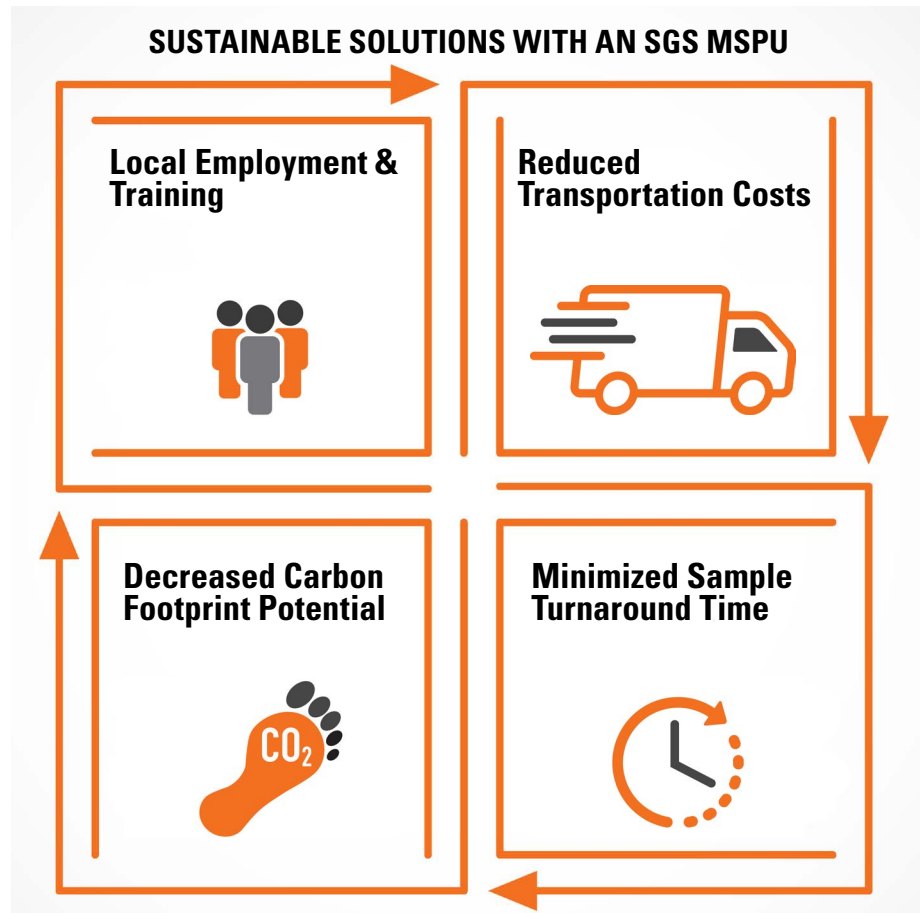
When it comes to laboratory services at your site, SGS is the unparalleled global leader. We have earned the reputation for applying the same sustainable solutions, ethical principles, procedures and quality standards in our mobile laboratories that we do in our own on-site and commercial laboratory facilities. Our mobile sample preparation units (MSPU) allow you to access trusted, third party laboratory services in locations that might not otherwise support full laboratory facilities.

## EXPERTISE

SGS brings over 30 years of on-site and commercial laboratory experience to the design of mobile laboratories to ensure that they are safe, efficient, well staffed and operationally stable. Having SGS to locate, equip, staff and operate a mobile sample preparation laboratory on your project site will benefit your operations. Regardless of how remote your project, we will ensure that you benefit from our full scope of capabilities.

SGS mobile sample preparation units promote fast sample preparation turnaround times prior to being submitted for timely geochemical or assay data that you need to effectively run and optimize your exploration or mine development project.

## SUSTAINABLE SOLUTIONS WITH AN SGS MSPU



## SUSTAINABLE SOLUTIONS

At SGS, we use our scale and expertise to enable a more sustainable future. We ensure that we minimize our impact on the environment throughout the mining value chain. We are good corporate citizens and invest in the communities in which we operate. An SGS MSPU can help provide significant sustainable benefits to a project including:

- Hiring directly from local communities for employment and subsequent training requirements.
- Reducing carbon footprint in sample transportation and returned rejects for landfill.
- Decreasing sample turnaround time allowing for shorter program lengths.

## FLEXIBILITY

Various models of the SGS MSPU are available depending on the project location/climate, sample size, preparation protocol and required sample throughput. We install state-of-the-art equipment in all MSPU operations.

SGS selects equipment based on our unmatched experience operating remote site laboratories. All equipment used in an MSPU is selected for its robustness of operation, ease of repair and its

adherence to the highest HSE industry standards.

Our mobile laboratories can also help transition exploration projects into production as on-site facilities are being constructed.

### SGS FAST ADD-ON

Get field-generated data quickly to make real-time decisions with the addition of SGS FAST (Field Analytical Services & Testing) to the field preparation service. SGS FAST solutions provide you with essential analytical data for prepared samples within 24- to 48-hours from the receipt of the sample at the MSPU. Using a combination of an SGS MSPU and portable analytical technologies such as the Fourier Transform IR (FTIR), Portable NIR (pNIR) and Portable XRF (pXRF). This combined dedicated field-based preparation and analytical testing solution, gets you the timely, objective geochemical and/or mineralogical data you need to make quick and accurate decisions.

### BENEFITS OF THE SGS MOBILE LABORATORY

You gain a competitive edge when you take advantage of SGS's mobile laboratory services. By choosing our mobile laboratory services, you will:

- Benefit from fast turnaround and accurate, reliable geochemical and/or assay data; either through expedited access to our commercial laboratories or with the addition of an in-field SGS FAST analytical capability.
- Reduce shipping delays.
- Gain flexibility. Working with your needs we can verify an appropriate industry-compliant preparation protocol that will be suitable for your deposit.
- Allocate your financial and staff resources more effectively by focusing on the core aspects of your program.
- Take advantage of SGS's globally recognized technical expertise and laboratory quality management program.



When you choose an SGS MSPU, you get globally recognized standardized sample preparation on your doorstep, leading to a reduction in transportation costs related to offsite analytical programs. Contact us to see how you can take advantage of our extensive MSPU expertise and experience anywhere in the world.

### CONTACT INFORMATION



[NAM.NATURALRESOURCES@SGS.COM](mailto:NAM.NATURALRESOURCES@SGS.COM)



[WWW.SGS.CA/MINING](http://WWW.SGS.CA/MINING)

WHEN YOU NEED TO BE SURE

**SGS**