



Burundi pre-shipment
verification of conformity program



On March 15, 2014, the Burundi Bureau of Standards (BBN) implemented the Burundi Pre-shipment Verification of Conformity Program.

This pre-verification of conformity (PVoC) program mandates the assessment of all regulated products being imported into Burundi. A certificate of conformity (CoC) is issued as proof products comply with applicable standards.

OBJECTIVES

PVoC aims to:

- Ensure conformity of imported products to the applicable national, regional or international standards
- Protect the public from substandard products that may endanger public health, safety and the environment
- Establish a robust import quality verification regime that harmonizes with other state members of the East African Community

BASIC FEATURES

- CoC is a mandatory document for clearing goods through Customs
- Supplier/exporter is responsible for compliance and is liable for all economic consequences arising from shipping goods without a CoC

PVOC PROCEDURE

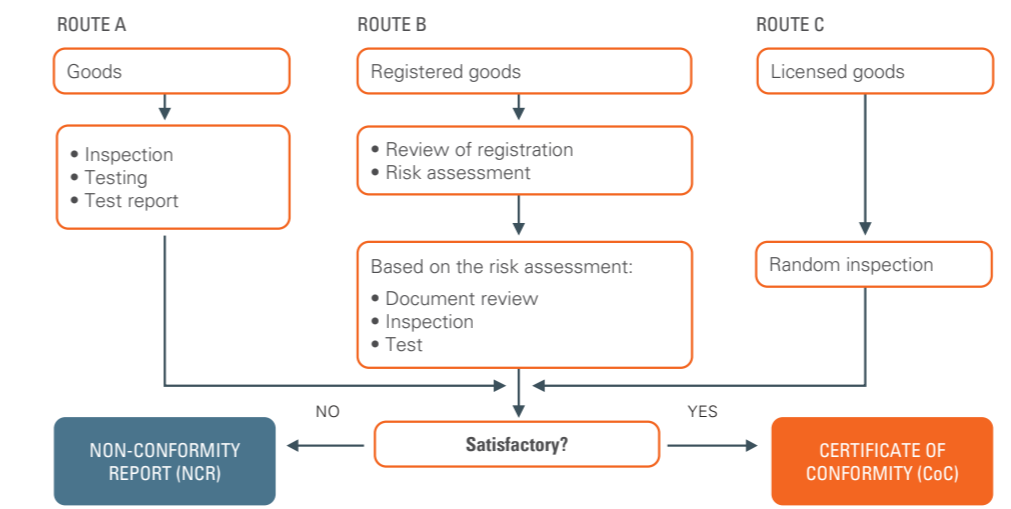
- Exporter needs to submit the request for certification (RFC), proforma invoice and quality documents, such as test reports, product technical sheets, quality management system certificates, etc.
- We analyze the documents and confirm the applicable standards and certification route (see below)
- We coordinate product sampling & testing with an accredited or approved laboratory (if applicable)
- Physical inspections are coordinated and conducted (if required)
- Exporter makes payment prior to inspections

Approved laboratory include:

- SGS laboratories
- Third party accredited ISO/IEC 17025
- Manufacturer laboratories that meet the following criteria:
 - Operate under a quality management system (QMS)
 - Provide a list of laboratory equipment with up to date calibration records
 - Use equipment capable of performing tests that meet the required standard

ROUTES OF VERIFICATION

- ROUTE A: applicable to all suppliers/manufacturers who do not have regular shipments and to sensitive products which require regular quality control with compliance to standards
- ROUTE B: applicable to all suppliers/manufacturers with regular shipments and registered product (registration is renewed annually, subject to continual compliance)
- ROUTE C: applicable for manufacturer only (for certified products)



FEES STRUCTURE, USD

ROUTES	AD VALOREM FOB VALUE, %	MINIMUM FEE	MAXIMUM FEE
A	0.50	235	2375
B	0.45	235	2375
C	0.25	235	2375

Fees for used vehicles:

- USD 200 per vehicle (up to five vehicles)
- USD 150 per vehicle (from the sixth vehicle inspected in larger batches)

Note: the above fees do not include:

- Testing: analysis, additional sampling, sealing containers
- Product registration
- Manufacturer licensing
- Taxes

WHY SGS?

With extensive experience in managing conformity assessment programs worldwide, we have the expertise to help you ensure compliance with Burundi's regulations and standards. We leverage a global network of experts and dedicated software platform to provide exporters with comprehensive and customizable solutions tailored to their needs.

WE OFFER

- One-stop-shop for all global certifications
- Key account management (local or through our contract management office)
- Real-time updates on your order status
- Support in connecting all stakeholders
- Tailored solutions to address specific exporter requirements



**SUBSCRIBE TO OUR
NEWSLETTER**

When you need to be sure

SGS SA - Bureau de
Liaison Burundi
Immeuble NDAMAMA HOUSE à la
Chaussée du Prince Louis
Rwagasore N° 245
PB: Box 75 Bujumbura

+ 257 243334
+ 257 243338
+ 257 245142
+ 257 79097863
+ 257 61214088

josiane.rubenge@gs.com
bujumbura.lo@sgs.com

sgs.com

