

An aerial, high-angle photograph of a port at night. The scene is illuminated by warm yellow lights from cranes and streetlights, contrasting with the cool blue tones of the water and sky. Numerous colorful shipping containers (red, blue, green, yellow) are stacked in neat rows on the pier. Several large gantry cranes are positioned along the waterfront, with one in the foreground appearing to be in the process of loading or unloading a ship. The ship's deck is visible, showing more containers and equipment. The overall atmosphere is one of industrial activity and global trade.

PVoC Program in Kenya

SGS



SGS is contracted by the Kenya Bureau of Standards (KEBS) to provide pre-export verification of conformity (PVoC) services for imports to Kenya. Effective June 23, 2022, this is our sixth consecutive contract received through competitive tender to provide PVoC services for 36 months. We are the only mandated certification body providing PVoC services for all zones listed below.

The PVoC program requires all regulated goods imported into Kenya to be assessed and verified against the requirements of the applicable standard and/or technical regulations. Upon successful completion of this process, a certificate of conformity (CoC) is issued as evidence of product compliance.

ZONES COVERED

7	India, Pakistan and Sri Lanka
8	Japan, South Korea, Indonesia, Malaysia, Philippines, Thailand, Singapore, Vietnam and Cambodia
9	Mexico, Guatemala, El Salvador, Honduras, Nicaragua, Costa Rica, Panama, Venezuela, Colombia, Brazil, Ecuador, Peru, Bolivia, Paraguay, Uruguay, Argentina, Chile, Cuba, Jamaica, Guyana and Dominican Republic
10	United States of America and Canada
11	Lithuania, Belarus, Ukraine, Georgia, Armenia, Azerbaijan, Turkmenistan, Uzbekistan, Kazakhstan, Tajikistan, Russian Federation, Turkistan, Czech Republic, Slovakia, Hungary, Bulgaria and Poland
12	Turkey, Greece, Cyprus, Spain, Portugal and Malta
13	Italy, France, Switzerland, Belgium, Luxembourg, Liechtenstein, Germany, Austria and Netherlands
14	Norway, Sweden, Finland and Denmark
15	Iran, Iraq, Saudi Arabia, Oman, Jordan, Syria, Lebanon, Yemen, Bahrain, Qatar and Kuwait
16	United Arab Emirates
18	Mozambique, Namibia, Lesotho, South Africa, Swaziland and Mauritius

WHY SGS?

- We operate in 11 out of 18 zones
- With long experience of operating in Kenya, our contract management office in Nairobi will always find the right solution for you
- Extensive experience in delivering conformity assessment services. With an unrivaled network of local contract managers, a dedicated team of professionals and a superior software platform, we ensure consistency and speed
- Dedicated account managers offering tailor-made solutions for all requirements
- Key account management lets you deal with one SGS office for all certification requests, simplifying the process for clients who regularly import from suppliers with subsidiaries in multiple countries
- Exporter Portal – a web-based app that streamlines the process of submitting applications, allowing you to easily submit online requests for CoC, track your application's status and communicate with us

PRE-SHIPMENT INSPECTION PROCEDURE

To obtain a CoC, the importer/exporter must:

- Submit an import declaration fee (IDF) (if available at the time of application), pro-forma invoice to SGS and completed request for certification form (RFC) either manually or online via the Exporter Portal link: <https://exporter-portal.sgs.com/> An IDF and/or unique consignment reference (UCR) may be submitted later, before the CoC is issued

RECOGNIZED LABORATORIES

- ISO/IEC 17025-accredited laboratory
- Contractor's laboratory
- Government-owned laboratory

RECOGNIZED TEST REPORTS

Details of the test report categories and requirements needed for certification are detailed in the table below.

NO.	CATEGORY OF GOODS	TEST REPORT	REMARKS
1.	Consumer products	Use of test report from recognized lab. (ISO/IEC 17025-accredited testing facilities with scope of accreditation covering products for certification, contractor's laboratory or government-owned laboratory)	In the absence of these laboratories, PVoC agents may undertake witness testing of the product to inform their certification decision.
2.	Machinery and spares	Use of internal test reports from manufacturer's lab	Manufacturer's lab must be certified to ISO 9001.
3.	Medical equipment (except medical consumables)	Use of internal test reports from manufacturer's lab plus a permit from the Pharmacy and Poisons Board (PPB)	Manufacturer's lab must be ISO 13485 certified.
4.	Automotive parts and spares	Use of internal test reports from manufacturer's lab	Manufacturer's lab must be IAFT 16949 certified.
5.	Chemicals/raw materials without applicable Kenya Standards	Use of internal test reports from manufacturer's lab	Manufacturer's lab must be certified to ISO 9001.

- SGS confirms the applicable standards and certification route (as explained below)
- SGS co-ordinates inspection scheduling, product sampling and testing in a recognized laboratory (if applicable)
- Please note the following are necessary for inspection: RFC, IDF, pro forma invoice and payment

CERTIFICATION ROUTES

Route A

- This route applies to exporters of ad-hoc consignments or high-risk goods, e.g. sugar, cereals, second-hand clothes, etc.
 - Documents proving conformity to Kenyan or approved international standards are mandatory for every consignment, e.g. recognized test reports, technical specifications, material safety data sheet (MSDS), quality management system (QMS) certificates, etc.
- Scheduling and inspection of goods, sampling and testing in the absence of test reports from a recognized laboratory (where applicable)
- In the absence of these laboratories, PVoC agents may undertake witness testing of the consumer product to inform their certification decision, or refer to the QMS for other products

Route B

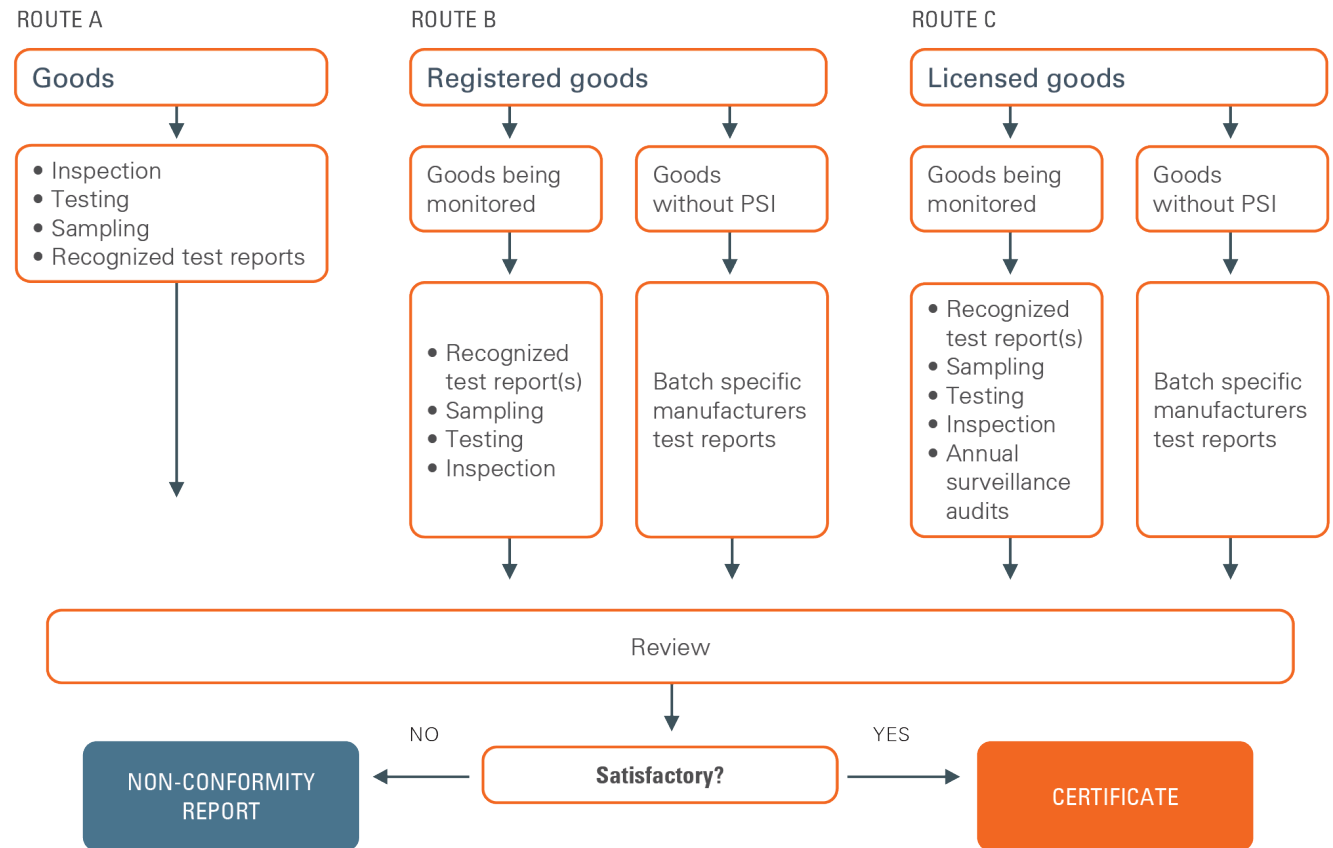
- This route applies to frequent exporters and manufacturers of homogeneous goods, e.g. computers, automotive spare parts, appliances, apparel, processed food, cosmetics, etc.
 - Valid QMS certificate
 - Copies of at least two CoC from previous shipments certified under route A
 - Test report(s) from previous shipments certified under route A and monitoring of at least two consignments during the validity period
 - Monitoring requires two inspections and two test reports from a recognized laboratory

A statement of registration (SOR) is valid for one year.

Route C

- This route applies only to manufacturers or their authorized representatives
 - Audit of the factory where the goods are manufactured
 - Recognized test report(s) traceable to goods being licensed
 - Monitoring of one consignment per year during the validity period of the license

Statement of licensure (SOL) is valid for three years.



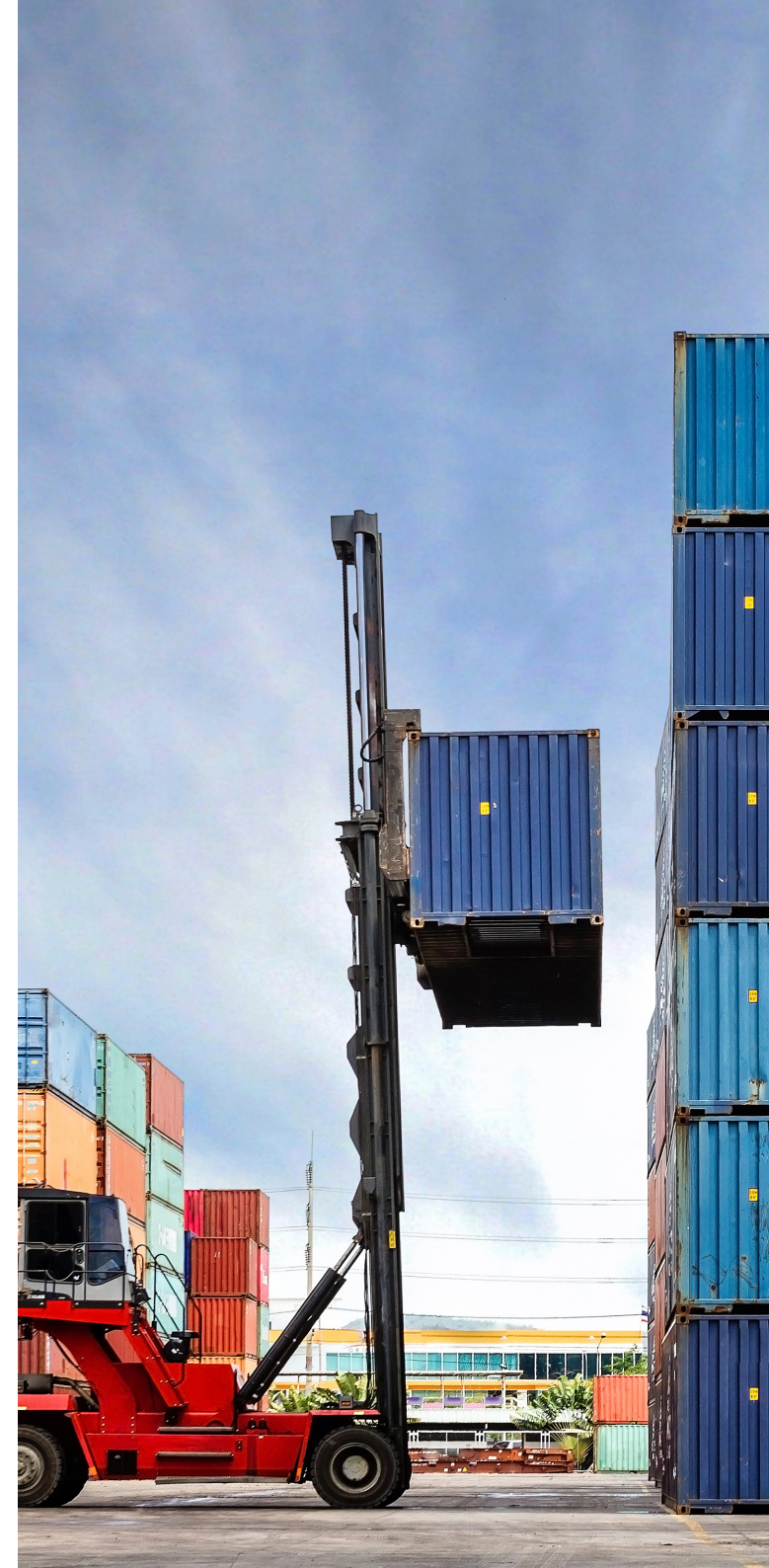
FEE STRUCTURE, USD

ROUTES	AD VALOREM AS A % OF THE DECLARED VALUE	MINIMUM FEE	MAXIMUM FEE
A	0.6%	265	2,700
B	0.55%	265	2,700
C	0.35%	265	2,700

The above fees do not include:

- Sampling and testing
- Product registration (route B)
- Manufacturer's licensing (route C)
- Re-inspection

NOTE: application for CoC for ALL routes MUST be placed at least four days prior to the consignment leaving the country of origin.





**SUBSCRIBE TO OUR
NEWSLETTER**

When you need to be sure

SGS Kenya Limited
Victoria Towers, 2nd Floor,
Kilimanjaro Avenue, Upper Hill
P.O Box 72118 – 0200,
Nairobi, Kenya

(+254) 0709 633 400/402

info.pvoc.kenya@sgs.com

sgs.co.ke

sgs.com



SGS Kenya Limited
SGS House, Shimanzi,
Ali Punjani Street
P.O Box 90264 – 80100,
Mombasa, Kenya

(+254) 0709 633 400/402

info.pvoc.kenya@sgs.com

sgs.co.ke