

SGS
Investor Days
2022



EEME regional focus

Teymur Abasov, COO

Some facts about SGS in EEME



28
countries



180+
offices



150+
testing
facilities

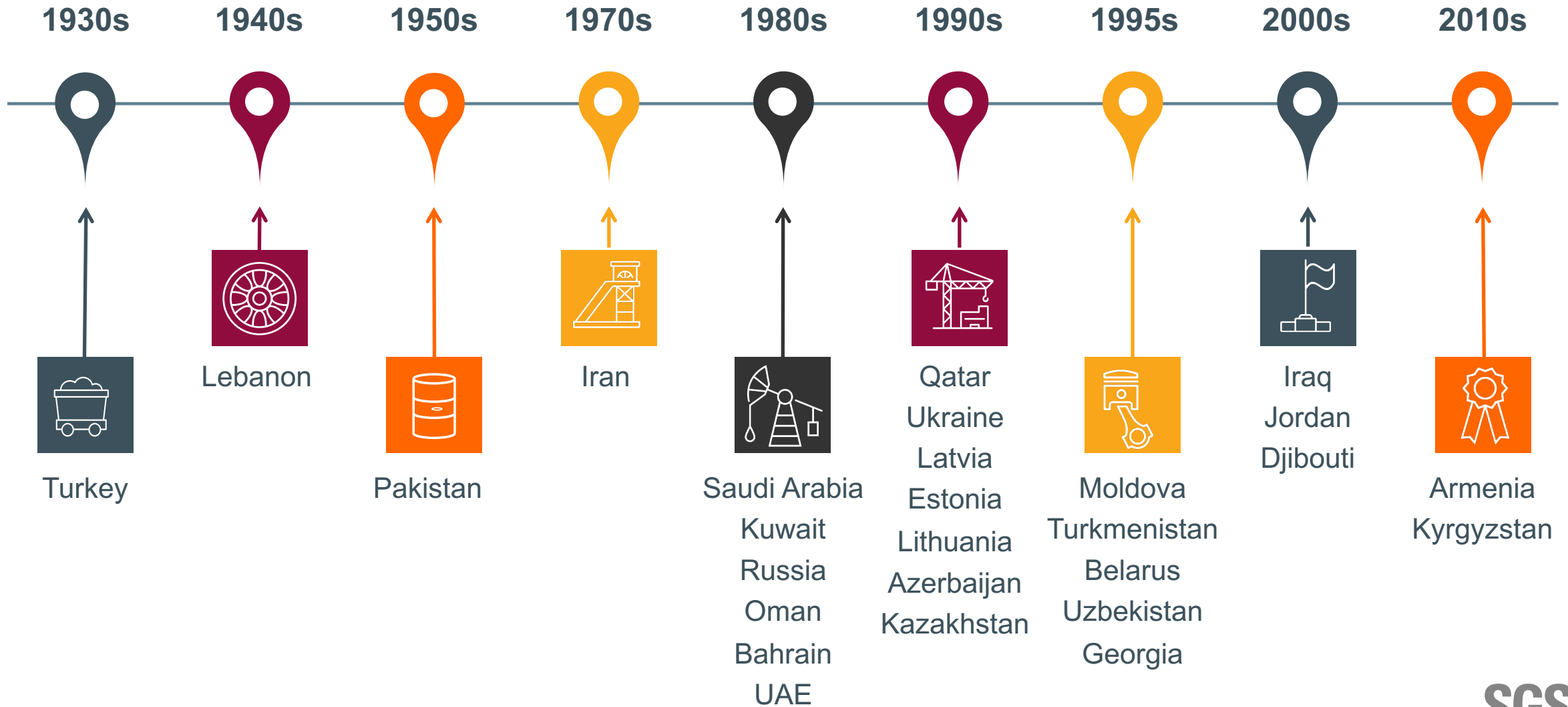


12 000
people



25
languages
spoken

Milestones of SGS expansion in the EEME region



Key regional priorities



Sustain

Maintain leading positions in segments where we are already present



Diversify

Diversify regional portfolio by innovation and replication of best practices from other regions



Expand

Identify lucrative market segments where we are weak, or not present, and actively attack those. Expand geographically



Optimize

Achieve maximum efficiencies by applying centralization, automation measures



People

Develop talented and well-motivated teams consisting of highly qualified professionals

Regional evolution in service portfolio

Starting point

Quality & quantity inspection for:

- Agricultural commodities
- Minerals
- Oil & Gas

Diversification

- Testing: Geochemistry & Metallurgy, Textile & Food, Environment & Materials
- Audit, Training & Certification
- Asset Integrity Management
- TransitNet Services
- Sustainability Services
- Outsourcing
- ... and more

New opportunities

- Digitalization & Big Data
- Remote and Real time monitoring & tracking



Re-engineering processes and services to meet new challenges



Boosting efficiency

- Implementing WCS program in testing facilities
- Digitalizing sample management
- Streamlining back-office operations

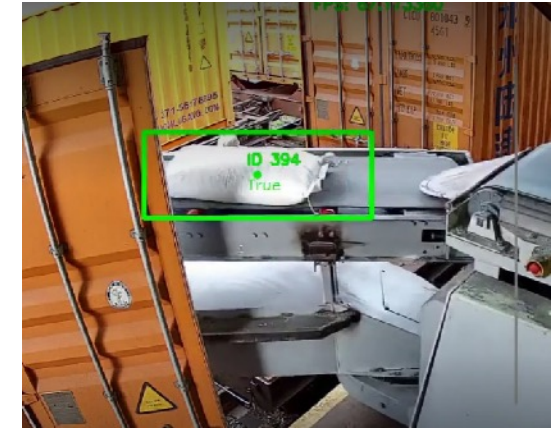


Innovating

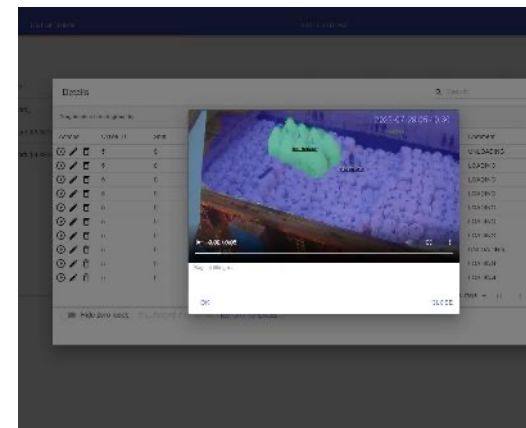
- Remote inspections via QiiQ app or drones
- Customer online portals for complex projects
- Artificial Intelligence (AI) used for health and safety supervision and big bag counting
- Digitalization of Construction Monitoring processes

Example of using AI for commodities inspection

- Bags counting based on image recognition
- Vessel identification in terminal
 - Load or upload
- Real time monitoring 24/7
- Report in Excel with video playback for each shipment



CONTAINERS LIST				
Containers List				
Actions	#	Start loading ↓	End loading	Platform
✍️ 🗑️		23.12.2021, 14:00:21		
✍️ 🗑️		23.12.2021, 11:36:12	23.12.2021, 11:56:21	
✍️ 🗑️		23.12.2021, 11:10:33	23.12.2021, 11:36:12	
✍️ 🗑️		23.12.2021, 08:50:45	23.12.2021, 09:32:49	
✍️ 🗑️		22.12.2021, 16:29:13	22.12.2021, 17:15:42	
✍️ 🗑️		22.12.2021, 13:43:37	22.12.2021, 16:24:13	
✍️ 🗑️		22.12.2021, 14:06:59	22.12.2021, 14:51:39	
✍️ 🗑️		22.12.2021, 13:21:59	22.12.2021, 14:06:59	
✍️ 🗑️		22.12.2021, 11:17:31	22.12.2021, 11:56:59	



Example of using AI for health and safety supervision



Zone ID

Save video fragment
 Zone is activated

Description *

Event detection type:

- Need a helmet and a vest
- Need a helmet
- Need a vest
- Red zone
- Faceid



- Event detection
 - Helmet availability
 - Reflective vest
 - Crossing red zones
- Facial recognition
 - Time of entering/leaving the site
 - Validity/availability of required documents
- Set of notifications to email/messengers
- Integration with Cyberdog

Some sustainability achievements*

55%



**decrease in CO₂
emissions since 2014**

30%



**women in leadership
positions**

47%



**decrease in Lost Time
Incident Rate (LTIR)
since 2018**

* Measured as per H1 2022

Developing local communities

- Encouraging healthy lifestyle
- Planting trees
- Cleaning up forests and urban public areas
- Donating blood
- Helping people in need



1,100 hours
on volunteering
in Q1, 2022

Questions?

