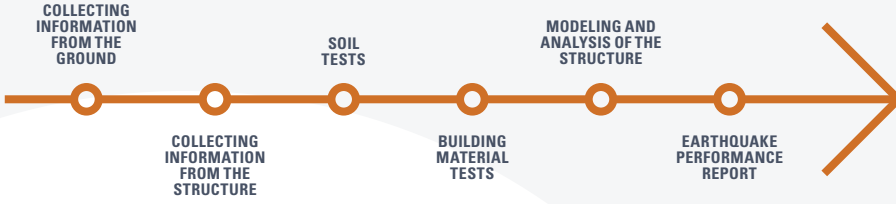


Earthquake engineering technical solutions

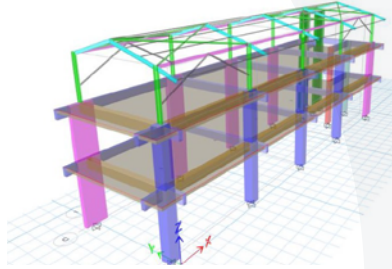
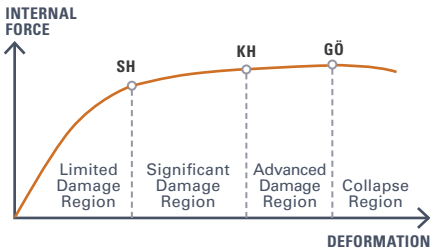
You can perform earthquake performance analysis of all kinds of buildings and structures such as workplaces, industrial facilities, factory buildings with SGS experience. The analysis reports prepared with the assurance of SGS provide you with comprehensive and understandable information about whether your structure is earthquake resistant or not, allowing you to make clear decisions about the future of your structure.

EARTHQUAKE PERFORMANCE ANALYSIS

Get comprehensive information about your buildings and structures with SGS



With its global experience and wide staff network, SGS provides all kinds of support to public institutions, private investors, real estate owners, insurance and construction companies in the building sector and earthquake engineering.



WHY SHOULD I HAVE AN EARTHQUAKE PERFORMANCE ANALYSIS?

- In accordance with the building / structure type (buildings, bridges, ports, etc.), the design earthquake specified in the relevant earthquake regulations is applied to the computerized structural modelling to determine whether the structure provides the target performance level.
- You can learn the possible damage status of your building / structure and you can make your structure safe with reinforcement methods accordingly.
- SGS reports comparing the costs of demolition and rebuilding and reinforcement in case the performance level of your structure is insufficient. It provides you with the optimum result by making financial and technical comparisons among the strengthening methods.
- Earthquake performance analysis does not require a formal application and does not force you to an official conclusion. It only allows you to be informed about the earthquake behavior of your structure and take precautions.

HOW IS EARTHQUAKE PERFORMANCE ANALYSIS DONE?

- Existing data of the structure are searched. (Projects, licenses, structure inspection reports of the building / structure, etc.)
- The knowledge level of the building is determined. If there is no project, the measurement drawings are prepared.
- Soil investigation reports are examined, otherwise soil tests are done.
- A test pit is opened inside the building and the foundation of the building is examined.
- Core tests and reinforcement determinations are made.
- The amount of rebar, diameters and spacings are determined by stripping the concrete.
- All data collected by modeling with the computer through the projects of the building and / or site survey are transferred to the program.
- A simulation is created by applying earthquake loads in accordance with the regulation.
- As a result of the analysis, a report stating the earthquake performance of the structure and its strengthening solutions is submitted to the customer.

- Performance level appropriate
- ✓ Structure is Safe
- ✓ Compliant with Earthquake Code



- Performance level insufficient
- ✗ Structure is Not Safe
- ✓ Strengthening
- ✓ Demolition



Please contact us for detailed information about our services.

SGS SUPERVISE GÖZETME ETÜD KONTROL SERVİSLERİ A.Ş.

Bağlar Mah. Osmanpaşa Cad. No: 95
İş İstanbul Plaza 34209 Güneşli /
İstanbul - Türkiye

t + 90 212 368 40 00

ind.turkiye@sgs.com

www.sgs.com.tr

SGS

When you need to be sure

WE ARE SGS – THE WORLD'S LEADING TESTING, INSPECTION AND CERTIFICATION COMPANY